

# Patriot Express Guardhouse



Create the ultimate secured work environment at a price you can afford with Allied Modular's **Patriot Express Guardhouses**

## Why Patriot Express?

- ✓ **Ready for Shipping in 10 Days or Less**  
Excellent for time crucial projects.
- ✓ **Multiple Sizes and Configurations**  
Perfect for fulfilling your layout needs and creating individualized security solutions.
- ✓ **Fast, Simple and Ready to Go!**  
Every part of our system is prefabricated, pre-finished and assembled in our factory and shipped ready for use.
- ✓ **Flexible**  
Assembled on a revolutionary mobile forklift-able steel base, this unit is designed so you can relocate anytime.
- ✓ **Superior Quality**  
Made with our durable Integra 400 4" wall system and UL Approved accessories.

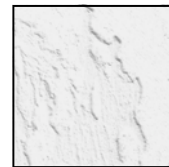


## Patriot Express Guardhouse Features

- Integra 400 (4" All-Weather Heavy-Duty Wall Panels)
- Durable Vermont Gray Vinyl Hardboard Interior and White Stucco Embossed Paneling Exterior.
- Energy Efficient T-8 1x4 Fluorescent Light Fixtures *(Bulbs Not Included)*
- Utility Raceways, with Outlets, Switches and Phone/Data
- Anti-Corroding Aluminum Frame System
- Premium Embossed Steel Door with Window
- Heavy Duty Steel Forklift-able Mobile Base
- Heavy Duty Aluminum Diamond Plate Flooring
- Tempered Safety Glass Windows
- Single Phase Breaker Box (Includes Breakers)
- Heavy-Duty Insulated Roof Panel System



Vermont Gray  
Durable Vinyl  
Clad Interior



White Stucco  
Embossed  
Weather Resistant  
Exterior Paneling.

## Available Sizes



4' x 6' x 8' High



6' x 6' x 8' High



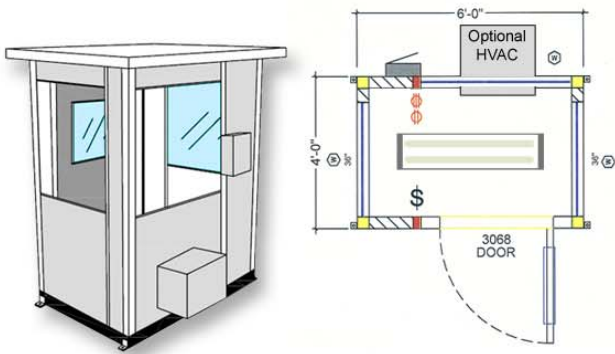
8' x 6' x 8' High



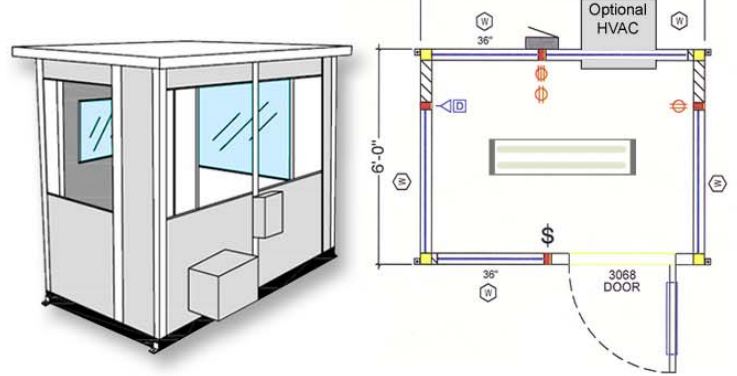
8' x 8' x 8' High

For more info call us Toll Free (888) 836-7850 or visit [www.alliedmodular.com](http://www.alliedmodular.com)

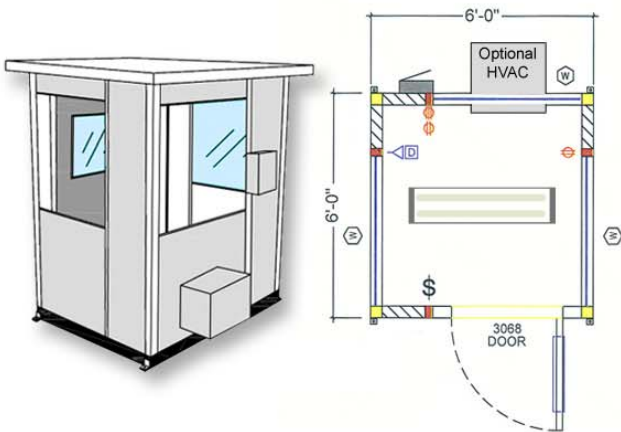
# Guardhouse Sizes and Configurations



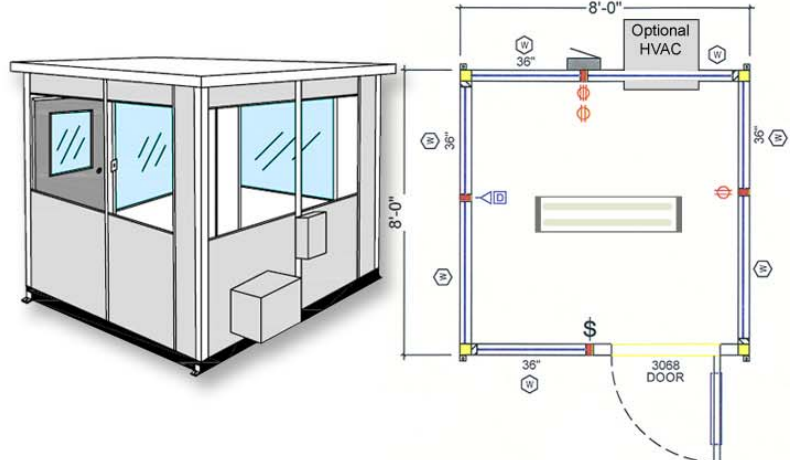
4' x 6' x 8' High—Exterior Guardhouse



6' x 8' x 8' High—Exterior Guardhouse



6' x 6' x 8' High—Exterior Guardhouse



8' x 8' x 8' High—Exterior Guardhouse

## PRICING

Prices Effective Though 2010

Size W x L x H	Windows	Lights	Outlets	Phone Jack	Data	Forklift-able Base	Model No.	Shipping Weight
4' x 6' x 8' High - 4" Exterior Guardhouse	3	1	1	n/a		Yes	XPEXT40406	2143 lbs.
6' x 6' x 8' High - 4" Exterior Guardhouse	3	1	2	1		Yes	XPEXT40606	2326 lbs.
6' x 8' x 8' High - 4" Exterior Guardhouse	5	1	2	1		Yes	XPEXT40608	2599 lbs.
8' x 8' x 8' High - 4" Exterior Guardhouse	7	1	2	1		Yes	XPEXT40808	2883 lbs.

## OPTIONAL FEATURES

**Wall Mounted HVAC**  
12'000 BTU  
Heat / Cool  
1 year on site warranty.

169 lbs.

**3 ft. 750 Watt Base Board Heater**  
Includes Thermostat  
Note: Extreme cold conditions may require the purchase of an additional base board heater.

8 lbs.

ALLIED MODULAR BUILDING SYSTEMS, INC.



Call Toll Free (888) 836-7850 or visit [www.AlliedModular.com](http://www.AlliedModular.com)